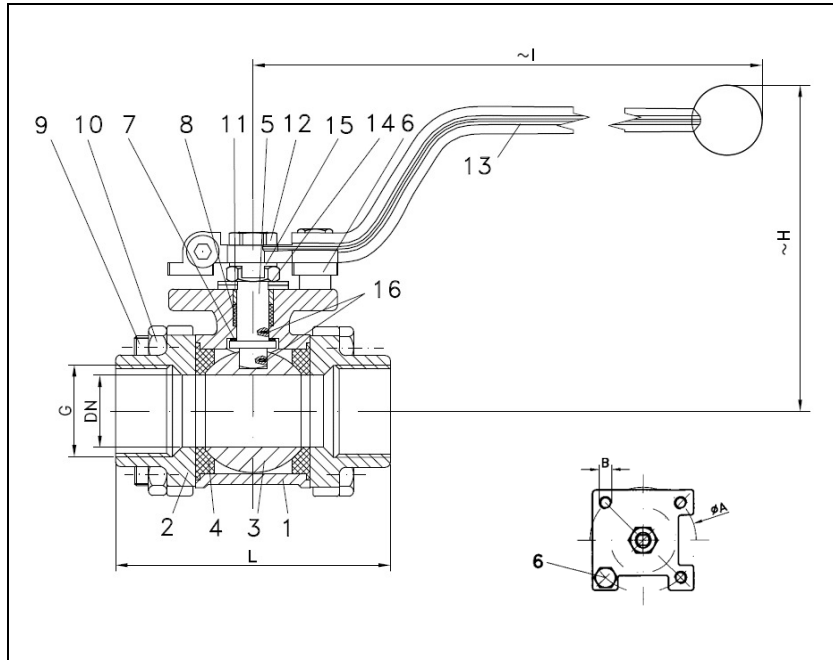


BALL VALVES RK-PROBALL

KH 3T M (NC), 1/4" - 4", PN63/100

casting lever



Ball valves RK-Proball KH 3T all sizes are also available with pneumatical, electrical or hydraulic actuators.

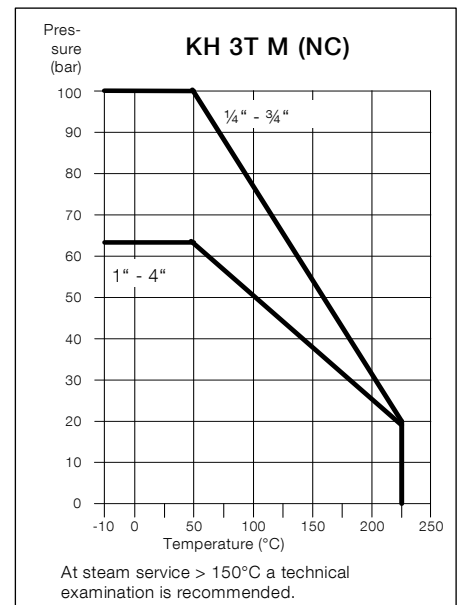
| No. | Part | Material | Material |
|-----|--------------------|----------|----------|
| 1 | body | 1.0619 | 1.4408 |
| 2 | cap | 1.0619 | 1.4408 |
| 3 | ball | 1.4408 | |
| 4 | seat | KFG | |
| 5 | stem | 1.4401 | |
| 6 | stop pin | 1.4301 | |
| 7 | washer | KFG | |
| 8 | stem packing | KF | |
| 9 | hex. screw | A2-70 | |
| 10 | hex. nut | A2-70 | |
| 11 | thrust washer | 1.4301 | |
| 12 | hex. nut | A2-70 | |
| 13 | lever | 1.4301 | |
| 14 | plate spring | 1.4310 | |
| 15 | locking plate | 1.4301 | |
| 16 | antistatic element | 1.4401 | |

Ball valve with threaded ends acc. to EN 10226-1 / EN ISO 228-1
full bore
face to face acc. to DIN 3202-M3

Specification:

Three-piece ball valve, threaded ends acc. to EN 10226-1 / EN ISO 228-1, face to face dimensions acc. to DIN 3202-M3, full bore, blow-out-proof stem, body material stainless steel (1.4408) or steel (1.0619), antistatic device, free of non ferrous metals, seat KFG, stem packing KF, disc spring loaded adjustable, top flange DIN EN ISO 5211, approved by PED, certified acc. to GERMAN clean air act VDI 2440, with lever.

Marking: RK-Proball
Types: KH 3T M (NC)-1.0619
KH 3T M (NC)-1.4408



Ordering example:
KH 3T M (NC), 2", PN 63, 1.4408

Dimensions

| DN mm | G inch | PN | dimensions (mm) | | | top flange ISO 5211 | | Kv-value m³/h | torque Nm | weight kg | |
|----------|-----------|-----|-----------------|-----|-----|---------------------|-----|------------------|--------------|--------------|------|
| | | | H | I | L | Ø A | B | | | | |
| 10.6 | 1/4 | 100 | 72 | 154 | 50 | F03 | 36 | M5 | 6 | 3 | 0.5 |
| 12.7 | 3/8 | 100 | 72 | 154 | 60 | F03 | 36 | M5 | 7 | 3 | 0.5 |
| 15 | 1/2 | 100 | 86 | 169 | 75 | F04 | 42 | M5 | 10 | 5 | 0.7 |
| 20 | 3/4 | 100 | 93 | 169 | 80 | F04 | 42 | M5 | 25 | 10 | 0.9 |
| 25 | 1 | 63 | 105 | 222 | 90 | F05 | 50 | M6 | 35 | 11 | 1.3 |
| 32 | 1 1/4 | 63 | 110 | 222 | 110 | F05 | 50 | M6 | 46 | 20 | 2.2 |
| 38 | 1 1/2 | 63 | 124 | 222 | 120 | F05 | 50 | M6 | 80 | 26 | 2.8 |
| 49 | 2 | 63 | 146 | 304 | 140 | F07 | 70 | M8 | 110 | 30 | 4.4 |
| 65 | 2 1/2 | 63 | 170 | 304 | 185 | F07 | 70 | M8 | 310 | 70 | 9.8 |
| 80 | 3 | 63 | 176 | 354 | 205 | F10 | 102 | M10 | 360 | 90 | 14.8 |
| 100 | 4 | 63 | 207 | 354 | 240 | F10 | 102 | M10 | 820 | 120 | 25.4 |

06/2016

Subject to modification.